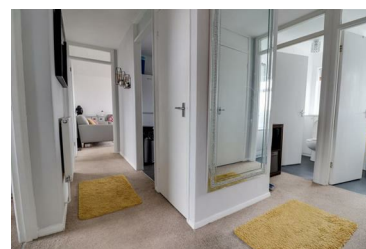




Castle Lane, Hadleigh
Guide Price £200,000



- Three Double Bedrooms
- Spacious Accommodation
- Generous Size Lounge Diner
- Garage in a Block
- Major Bus Links Close By
- Second Floor Flat
- Modern Kitchen
- Communal Gardens and Garden Storage Unit
- Close to Hadleigh High Street
- Ideal for First Time Buyers and Second Time Movers



1336 London Road, Leigh-on-Sea, Essex, SS9 2UH

Office: 01702 887 496 info@bearestateagents.co.uk www.bearestateagents.co.uk